



TechLab

The TechLab is a dedicated venue for the presentation and production of new media art forms at the Surrey Art Gallery.

Digital Media Call for Proposals 2006 Information for Artists

The Surrey Art Gallery welcomes proposals from artists, artist teams and curators for digital media exhibitions including mechanical, acoustic and electronic projects.

The Surrey Art Gallery accepts proposals on an ongoing basis.

Each TechLab exhibition will be scheduled for approximately of three months.

Network based artworks (i.e. database, web art etc.) must have a physical installation component in the TechLab as well as on-line.

Proposals may include performance presentations such as audio events, dance performance etc. in addition to their physical installation. Proposals may also include suggestions for accompanying programming (e.g. workshops, lectures, demonstrations). Artists may also request use of the TechLab as a studio for the production of new work on-site.

Proposal requirements:

- Letter of introduction, outlining the artwork proposed for exhibit
- Current curriculum vitae
- Artist's statement or curator's thesis outlining the issues and ideas explored in past work, and specifically the artwork proposed for exhibit

- Documentation of completed artwork (slides, DVD, CD-ROM, URLs) Please note audiovisual material may need to be accompanied by explanatory texts.
- Self addressed stamped envelope.

Budget:

- Exhibition fees will be paid with respect to the current CARFAC recommendations
- Proposals must include detailed descriptions of additional equipment, technical support and other needs to install and maintain their project if not currently in the TechLab inventory
- Include transportation needs for artworks, installation and testing hours and specialized technicians required.
- Funding is not available for international artist's travel or accommodation at this time.

Proposals must be submitted fully by mail (not electronically). All proposals received will be acknowledged.

Contact Information:

Surrey Art Gallery
Attention: Liane Davison, Curator
13750-88th Avenue
Surrey, BC Canada V3W 3L1
Phone: 604-501-5566

artgallery@surrey.ca
www.arts.surrey.ca
www.surreytechlab.ca

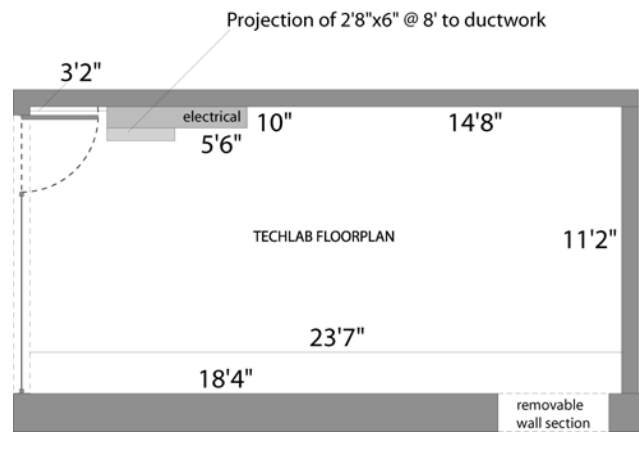


Image: M. Simon Levin – C.H.A.R.T. installation view

About the TechLab

Dimensions: Overall: 340cm wide x 711cm long (11'2" x 23'4") with 366 cm high ceilings (12'). The entrance consists of a glass person door, a tall narrow window 24cm x 232 cm (9.5" x 7'7") and a picture window 187cm x 200cm (6'2" x 6'7"). A portion of the wall can be removed to allow direct entry from the exhibit halls.

Interior: Ceiling joists (Wilson) support hanging loads. Flooring is linoleum, with some dark carpeting available. Electrical outlets are in the ceiling and baseboard. Walls are drywall over plywood and acoustic core. Computer network portals, data ports and phone all at baseboard. Temporary walls dividing the space have been constructed for some exhibits.

Lighting: Three lighting options (theatre lights, dimmable exhibition lights and fluorescent). Blinds are available for all windows.

Sound: The interior walls are acoustic to minimize sound transfer (in and out). The glass is double paned to control sound. Speakers and sound systems are installed as needed. Headset jacks can be accessed beside the flat screen.

Screens: Projections directly on painted walls, on a 10' wide screen, or on the window (transformed into a screen). A 17" flat screen monitor is available permanently imbedded in the wall, outside the lab, beside the entrance door.

Additional: Exterior, beside the entrance, are two light boxes imbedded in the wall – suitable for lit didactic panels, or transparencies. Upper light box area is 43cm x 79 cm (17" x 31") bottom is 43cm x 110cm (17" x 43.5"). Between these two is a flat screen monitor – capable of presenting video, PowerPoint etc. Cable jacks for sound for two headsets are located beside the flat screen. The large window can also be used as a projection screen. The wall opposite the entrance may also be available for installations, as well as the area directly in front and beside the entrance to the TechLab.

The following outlines the equipment currently available for use for the presentation and support of new media exhibitions

Current Hardware (February 2006):

- 9 PC workstations with high speed processors, speakers, graphics, sound and video cards, DVD burners
- Three PC desktops with DVD player
- Two 21" CRT monitors
- Five 19" LCD monitors
- Four 17" flat screen monitor (wall mounted)
- Two 15" LCD monitors
- Two 19" Multiformat LCD monitors
- Two 40" Multiformat LCD Monitors
- Two 6.5" Composite LCD Monitors
- Two Colour printers (one 13x19")
- Two 3D surround sound unit with subwoofer
- E-mac G4 800MHz with super-drive (DVD burning) OS9 bootable and OSX
- Mac Power PC G4 1.25GHZ OS9 bootable and OSX
- Two 4port Ethernet hubs
- Firewire based Digital/analog video converter
- Slide scanner
- Seven Battery back-up systems
- Six video/data projectors
- Tabloid size flatbed scanner
- Two digital video cameras (usable for web streaming)
- Web camera
- Two digital minidisk recorders
- Firewire repeater
- Four VGA cat5 extenders
- Still digital camera
- Fume extractor
- Soldering iron

- 60 Mhz oscilloscope.
- Additional AV support for the lab includes 6 channel audio, TV monitors, DVD players and VCR units.
- 2-640x480 pixel, usb2 webcams
- Note: additional equipment required for specific projects is negotiable.

Current Software (February 2006):

- MS Office
- Adobe Illustrator
- Adobe PageMaker
- QuarkXPress
- Adobe Photoshop
- Macromedia Director
- Macromedia Fireworks
- MS Access
- Final Cut Express
- RealProducer Pro
- Macromedia Flash
- Netscape Communicator
- Internet Explorer
- Real Player
- Adaptec CD Creator.
- Note: additional plug-ins, software and upgrades are acquired continually as needed.



Image: Toni Latour – *You Can Do It!* Installation view

Current Network (February 2006):

- The Lab is equipped with a T1 (fibre optic) connection to the City of Surrey's Internet service provider (only available for artists in residence in the TechLab) no outbound streaming capability

due to significant firewall.

- The Lab has access to a high bandwidth, independent Internet connection through SHAW with outbound and inbound streaming capability.

Technical Support:

The Lab's NT workstations and network have limited technical support and a direct high-speed link to the Internet (some firewall limitations).

Web Site Host:

www.arts.surrey.ca
www.surreytechlab.ca

The Lab's website is linked to the Gallery's web pages, which are hosted by the City's server.

Other support

The lab is equipped with telephone, voice mail, and email. The lab maintains its own perpetual email address.

TechLab goals:

- Provide an appropriate, equipped and structured environment and context for artists to develop and present original work and interact with the public
- Construct a forum that encourages a wide range and multi-directional exchange of ideas and dialogue on digital media including a network between the Gallery, artists, digital industry and an interested audience
- Enable the Gallery to present a range of applications of digital media art forms for visitors to experience.

2002-2006 TechLab exhibiting artists and artists in residence:

Julie Andreyev, Kate Armstrong, Sylvia Grace Borda, Diana Burgoyne, Carol Gigliotti, Toni Latour, Eve Lucki, jil p. weaving, M Simon Levin, Reva Stone, Judy Cheung.

The Surrey Art Gallery is a municipal contemporary art museum located in the Surrey Arts Centre in Bear Creek Park. Exhibitions include international travelling shows, and new works by Canadian artists. Programs include tours, workshops, events and lectures. Admission is by donation. Hours: Mon & Fri 9am-5pm, Tues to Thurs until 9pm, Sat 10am-5pm, Sun 12noon-5pm. Closed holidays and between Christmas and New Years Day.